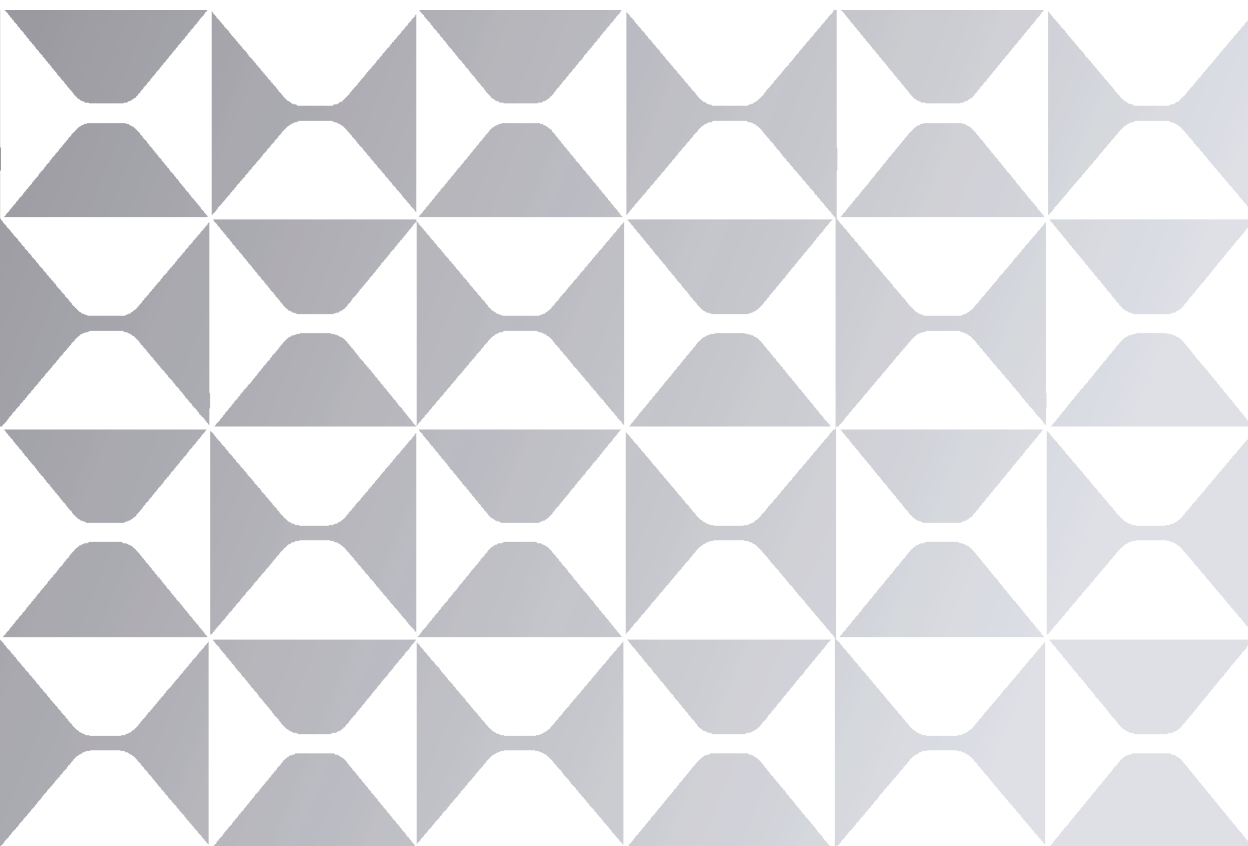


MAXHUB XBoard V7 Series

For Microsoft Teams Room



Microsoft Teams



Quick Start Guide

Model: V655T, V865T, V925T

V1.6

MAXHUB

All the pictures in this manual are for reference only, subject to our available products.

TABLE OF CONTENTS

Contents	01
I. Package Contents	04
II. Overview	05
III. Installation	07
1. Hang the Display on the Wall with a Wall Mount	07
2. Insert the Wireless Module	11
3. Install the PC Module	12
4. Remove the PC Module	13
IV. Connections	14
V. Power On/Off	17
VI. Software and Deployment	18
Initial Launch Setup	18
Switch Account	20
Change Admin Password	23
VII. Maintenance	25

Thank you for choosing MAXHUB product.

To ensure that you are able to fully utilize the capabilities of the product, we ask that you please read this quick start guide carefully and thoroughly before using the device. Should you have any questions or require assistance, please do not hesitate to contact our technical support team for guidance.



WARNING

Your V7 MTR XBoard requires windows updates on initial start. Depending on factors like internet speed, and how many updates are required, this may require 30-60 minutes, and you will see your XBoard reboot several times. When you see "Please Wait" on the display, do not be alarmed if it takes an extended period of time. Rebooting the XBoard during this CAN AND WILL CAUSE DAMAGE TO THE OS. Do not power down the device during updates. If this had happened, please navigate to maxhub.com, and open a support ticket. We will guide you through re-imaging the device, to recover it.

Safety Warnings

Placement

- (1) Please do NOT place the product on a slope, mount on an unstable stand or an insufficiently robust wall, a table nor a shelf.
- (2) Please do NOT expose the product to direct sunlight or any other heat source.
- (3) Please do NOT put the product near devices that generate strong magnetic fields.
- (4) Remove water splashes immediately with a clean dry cloth.
- (5) Please do NOT place any other heavy objects on the product.
- (6) Please do NOT put the unit directly facing an air conditioning vent to avoid condensation inside the glass.

Power Supply

- (1) Please check the product's operating voltage and frequency matches the local power configuration.
- (2) Please unplug the device during storming or thundering weather.
- (3) Please unplug the power should the product is left unused for long time.
- (4) Please keep the power cable from physical or mechanical damage.
- (5) Please use the original power cable from the accessory bag, don't modify or lengthen it.
- (6) Please make sure the AC is grounded.
- (7) This power cable comes with the device exclusively for this device only.
- (8) Please do not abruptly interrupt the power supply or unplug the device while it is powered on to prevent any potential damage.

LCD Screen

- (1) Do NOT use hard nor sharp objects on the screen other than MAXHUB stylus.
- (2) Please unplug the power before cleaning the product. Please clean the screen with a soft, dustless and dry cloth.
- (3) Please do NOT use water or liquid detergent to clean the product.
- (4) Please contact the authorised reseller for thorough cleaning.
- (5) Please do NOT display a high-brightness image on the screen for too long time.

Viewing Distance

For optimal viewing experience, it is recommended to position the commercial display at a distance that is 3-4 times the diagonal length of the screen.

Temperature & Humidity

- (1) Please do NOT put the product near a heater nor a radioactive source.
- (2) If the product is moved from a cold place to a warm one, please unplug the power cable and allow the product to gradually warm up for at least two hours to reduce the moisture.
- (3) Operating temperature of the product is 0°C-40°C, operating humidity is between 0%-90%RH.
- (4) avoid exposing the unit to rain or placing it in high humidity areas. Additionally, it is crucial to keep the unit in a dry and cool indoor environment.

Ventilation

Please ensure that the interactive flat panel is placed in an area with adequate ventilation to allow for proper heat dissipation. It is recommended to leave a minimum of 10cm of space on the left, right, and back of the device, and 20cm of space above it to ensure proper airflow and optimal performance.

Earphone

When using the earphones, it is important to be aware that prolonged listening at high volumes may cause temporary or permanent hearing loss. To prevent this, we strongly recommend turning down the volume before inserting the earphones into your ears.

Energy Saving

Please note that simply pressing the power button will not fully shut down the interactive flat panel. Instead, it will enter standby mode, with only the screen turning off. To properly shut down the device, please always select "Shut down" from the Windows Start menu.

Notes for Cleaning

Please do not block or cover the heat vents on the back panel and do not spray liquids on the device.

Power Switch Status Signs

"I" means power on, "O" means power off.

Maintenance

Please contact authorised reseller for maintenance or repairing.

Warranty Exclusions

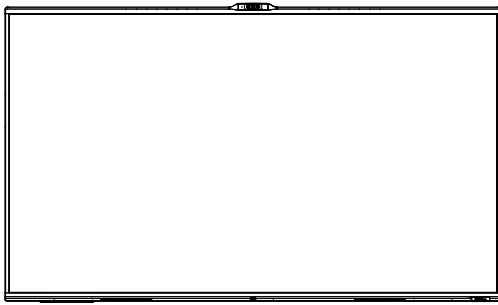
MAXHUB does not warranty Products that match any one or few of the following descriptions:

- (1) Product damage caused by violating the user manual.
- (2) Hardware damage caused by improper setup.
- (3) Product damage caused by unauthorised modification or maintenance.
- (4) Product damage caused by using in an unsuitable environment.
- (5) Product damage caused by abnormal external force.
- (6) Product damage caused by natural disasters or other force majeure.
- (7) Damaged Warranty Sticker.
- (8) Unable to provide effective purchase certificate.

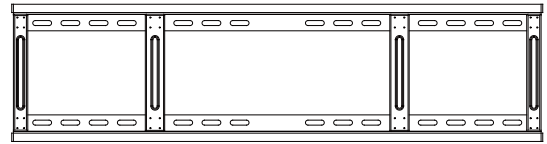
More help

For FAQs, technical support, software and user manual download, please visit: www.maxhub.com

I. Package Contents



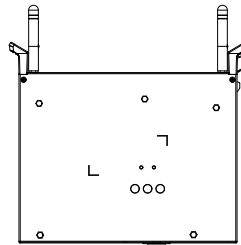
Interactive Display x1



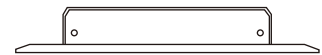
Wall Mount x1



Quick Start Guide x1



PC Module x1



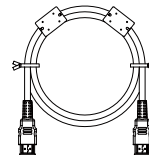
Wireless Module x1



Passive Stylus x2



Camera Cover x1
(only available for 92")



HDMI Cable x1
(1.5 m/4.92 ft)



Power Cord x1
(3.0 m/9.84 ft)



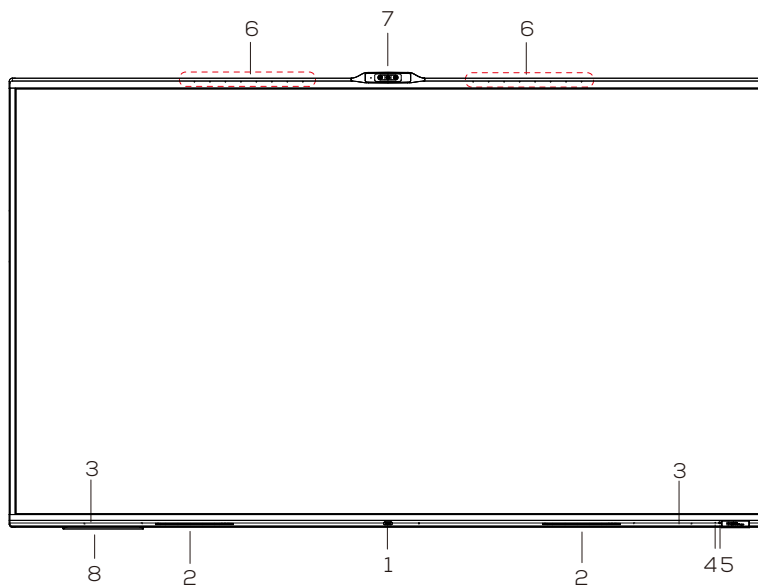
NOTE

1. The product contains three dimensions: 65 inch, 86 inch and 92 inch. This guide takes 86 inch as an example.
2. The power cord may vary depending on the regions.
3. The tables and diagrams in this guide are for reference only.

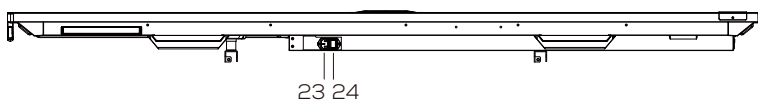
For more details, please refer to the actual product.

II. Overview

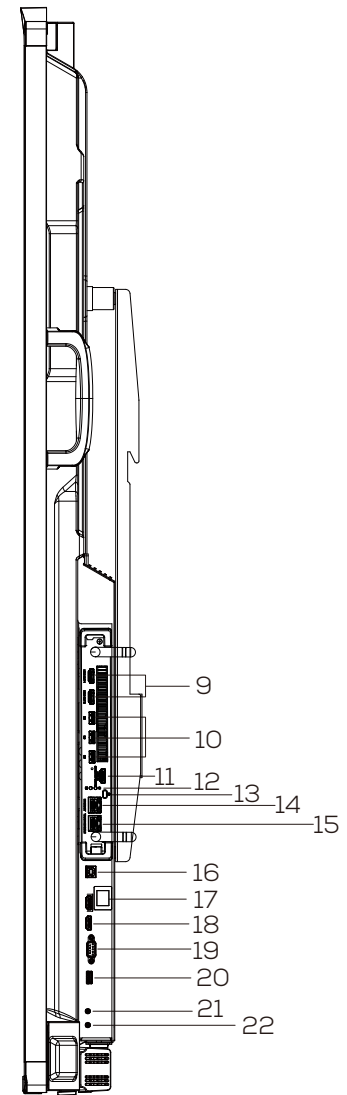
65 / 86 inch:



Front



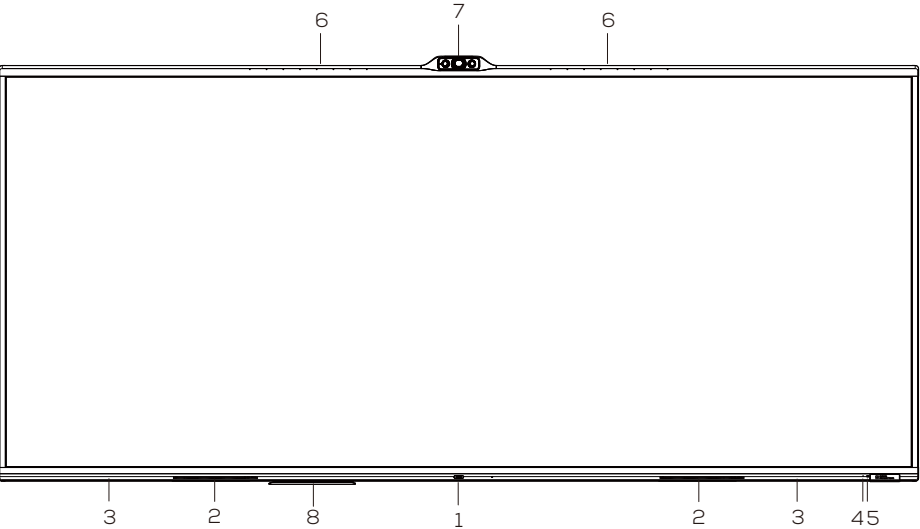
Bottom



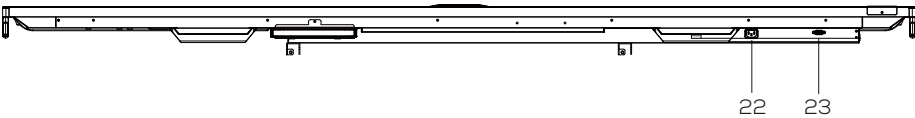
Side

- | | | | |
|----|-----------------------|----|-------------------------------------|
| 1 | Power Switch | 13 | Kensington Security Slot (optional) |
| 2 | Loudspeaker | 14 | Ethernet Port |
| 3 | Magnetic Zone | 15 | Touch Console Port |
| 4 | Remote Control Sensor | 16 | Touch USB |
| 5 | Light Sensor | 17 | Mic In |
| 6 | Microphone | 18 | HDMI In 1/2 (2.0) |
| 7 | Camera | 19 | RS232 |
| 8 | Wi-Fi Module | 20 | USB 2.0 |
| 9 | HDMI Out 1/2 (2.0) | 21 | Analog Audio Out |
| 10 | USB 3.0 | 22 | Analog Audio In |
| 11 | HDMI In | 23 | AC In |
| | (4K Content Share) | 24 | AC Switch |
| 12 | Power Indicator | | |

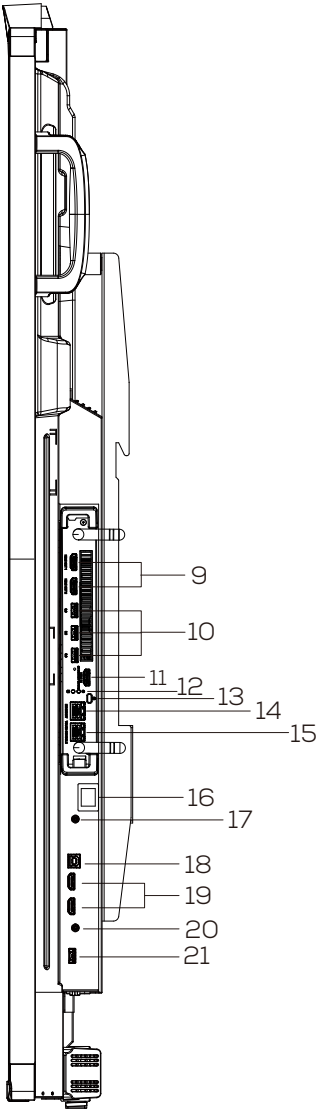
92 inch:



Front



Bottom



Side

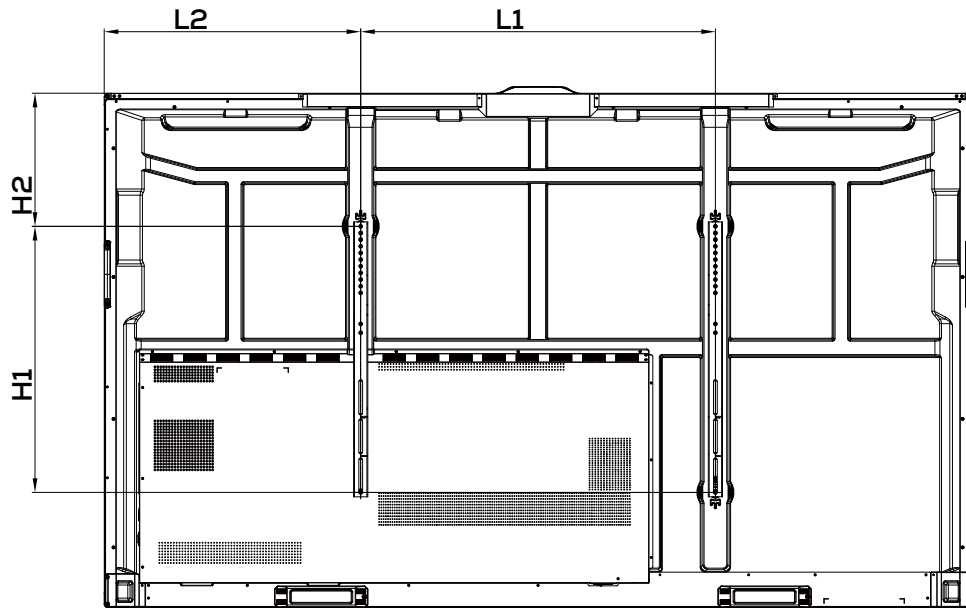
- | | | | |
|----|-------------------------------|----|-------------------------------------|
| 1 | Power Switch | 12 | Power Indicator |
| 2 | Loudspeaker | 13 | Kensington Security Slot (optional) |
| 3 | Magnetic Zone | 14 | Ethernet Port |
| 4 | Remote Control Sensor | 15 | Touch Console Port |
| 5 | Light Sensor | 16 | Mic In |
| 6 | Microphone | 17 | Analog Audio In |
| 7 | Camera | 18 | Touch USB |
| 8 | Wi-Fi Module | 19 | HDMI In 1/2 (2.0) |
| 9 | HDMI Out 1/2 (2.0) | 20 | Analog Audio Out |
| 10 | USB 3.0 | 21 | USB 2.0 |
| 11 | HDMI In
(4K Content Share) | 22 | AC In |
| | | 23 | RS232 |

III. Installation

1. Hang the Display on the Wall with a Wall Mount

Step 1. Confirm the location of the wall mount

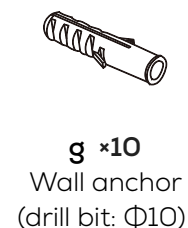
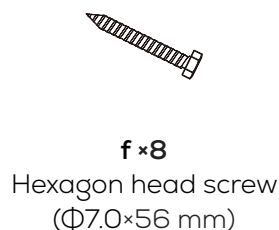
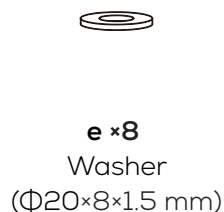
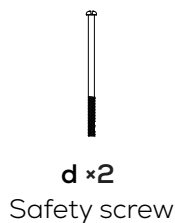
- ① Align the holes in each vertical bracket with the screw holes on the back of the display. Ensure they are level, and at your specified height.
- ② Firmly tighten screws to hold brackets to display. 4 screws are required.
- ③ Refer to the table below for the location of the locking hole.



Series	V7 Series for Microsoft Teams Room		
Dimension	65" - WIB9060H	86" - WIB9060H	92" - WIB9060H
L1 (mm / in)	600 / 23.6	800 / 31.5	800 / 31.5
L2 (mm / in)	444.2 / 17.5	578.5 / 22.8	700.9 / 27.6
H1 (mm / in)	400 / 15.7	600 / 23.6	600 / 23.6
H2 (mm / in)	233.2 / 9.2	300.2 / 11.8	219.1 / 8.6

Step 2. Hang the display on the wall with a wall mount

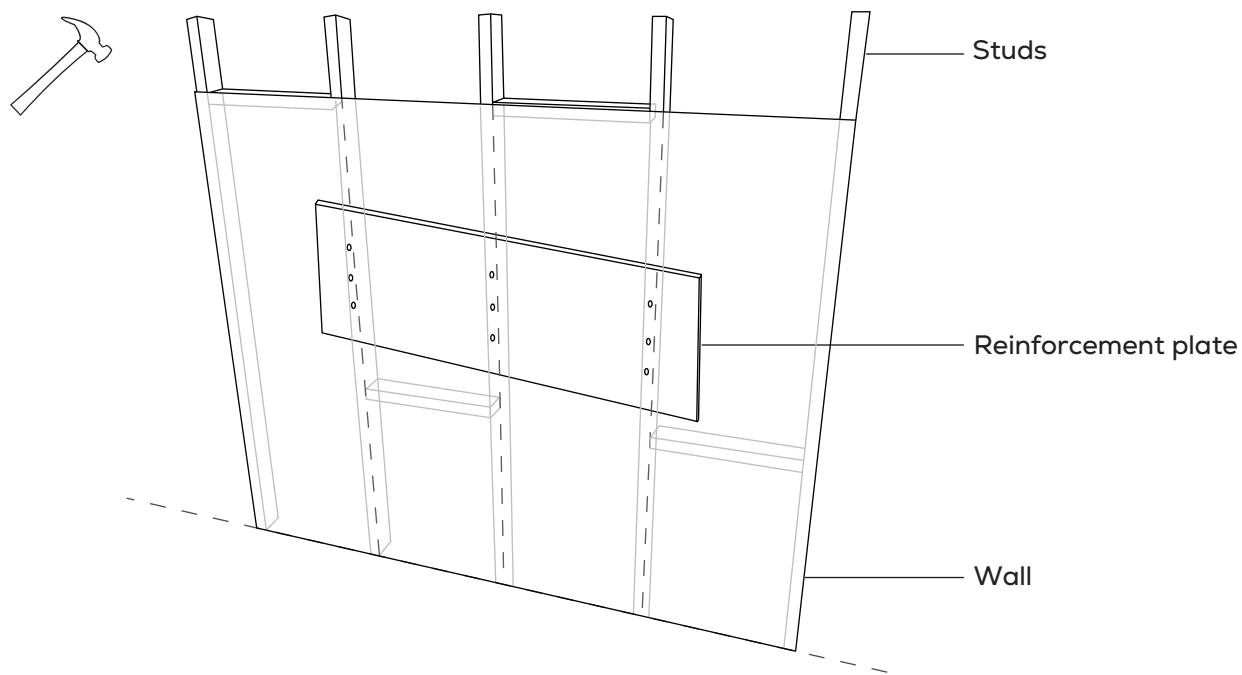
- ① Prepare the accessories in the screw package.



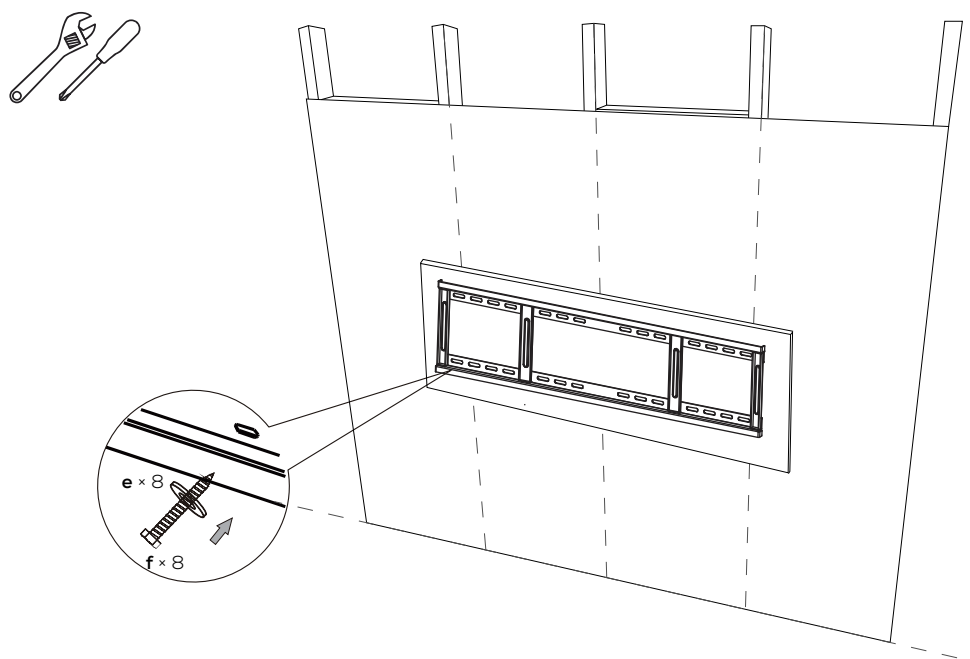
NOTE

The wall anchor is only available before the screw needs to be driven into walls such as concrete or brick.

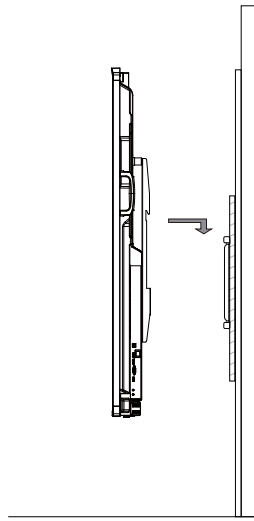
- ② Before wall mounting, locate specified studs and a reinforcement plate inside the wall to hold the wall up. (It can protect the display from falling off the wall.)



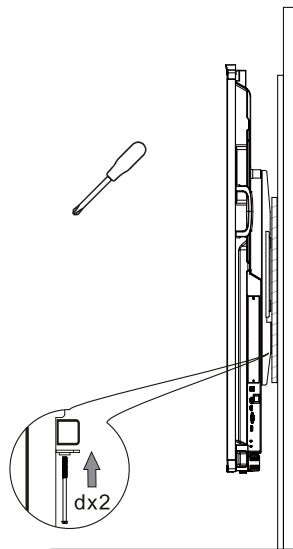
- ③ Attach the wall mount bracket on the reinforcement plate with 8 pcs of washer **e** and Hexagon head bolt **f** separately.



- ④ With the wall mount strip attached on the display, hang the display vertically on the wall mount bracket, keeping the display in the middle of the wall mount bracket.

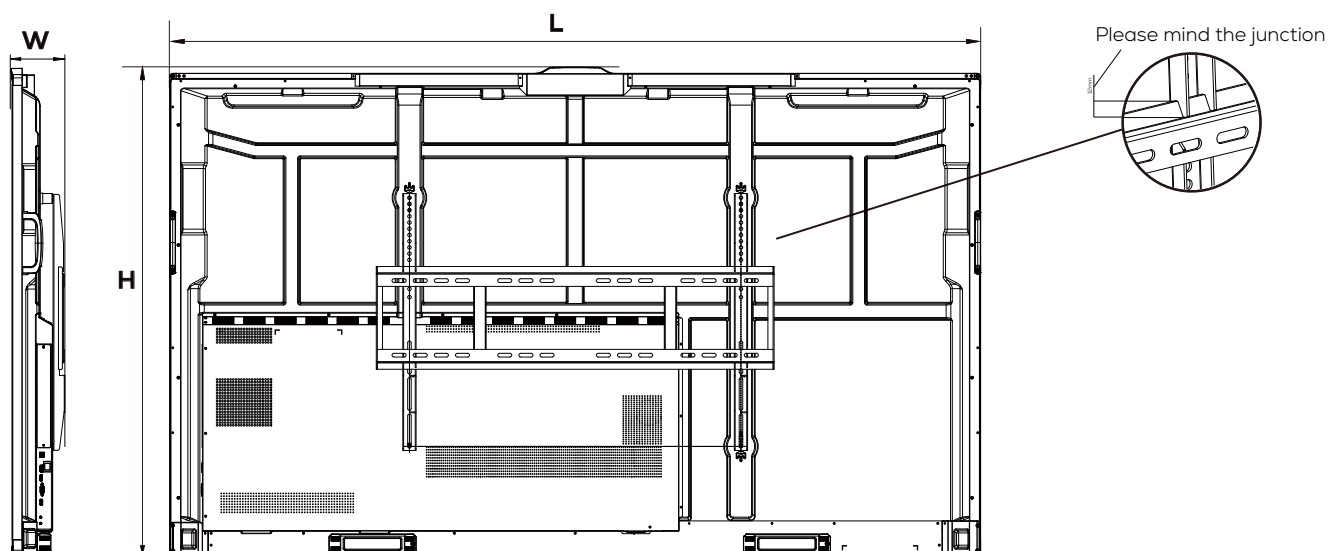


- ⑤ Firmly tighten the safety screws to hold the bracket to display. Ensure that the screws counter-clockwise to make the top of screw reach the second screw hole.



Step 3. Check the installation of the wall mount

To ensure ease of use, please take into consideration the physical dimensions of the display before wall mounting. It is recommended to maintain a proper distance between the wall and the back of the display.



Series	V7 Series for Microsoft Teams Room		
Dimension	65 inch	86 inch	92 inch
L (mm / in)	1488 / 58.6	1957 / 77	2201.7 / 86.7
H (mm / in)	917 / 36.1	1180.1 / 46.5	1025.2 / 40.4
W (mm / in)	115/4.5	130 / 5.1	118.6 / 4.7

2. Insert the Wireless Module



WARNING

Please make sure the power cord of the Interactive Flat Panel is disconnected before installation.

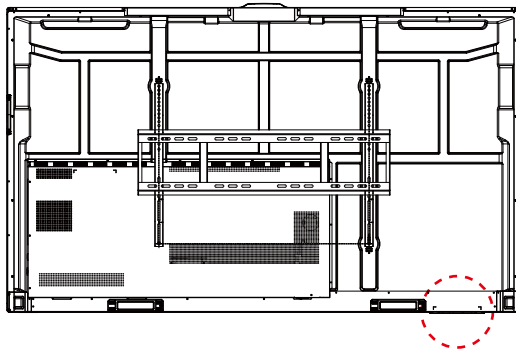
Step 1: Make sure that the following items are available before setting up the wireless module:

Interactive Flat Panel × 1

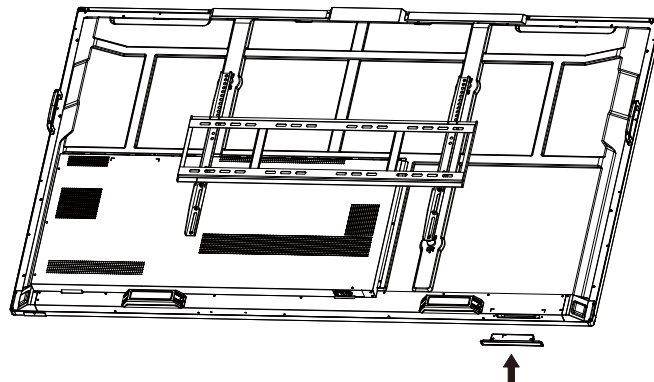
Wireless Module × 1

Step 2: Remove the Mylar strip on the bottom of the interactive flat panel.

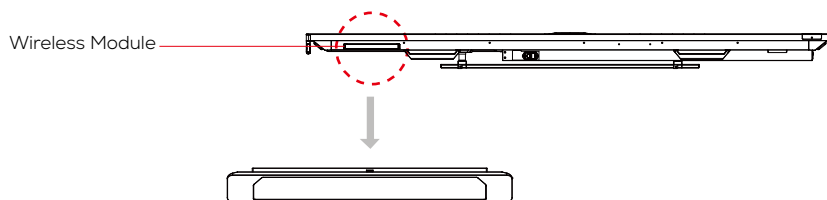
Loosen the two screws with a Phillips screwdriver and remove the cover of the wireless module.



Step 3: Insert the wireless module into the wireless module slot and screw it up.



The bottom view:



NOTE

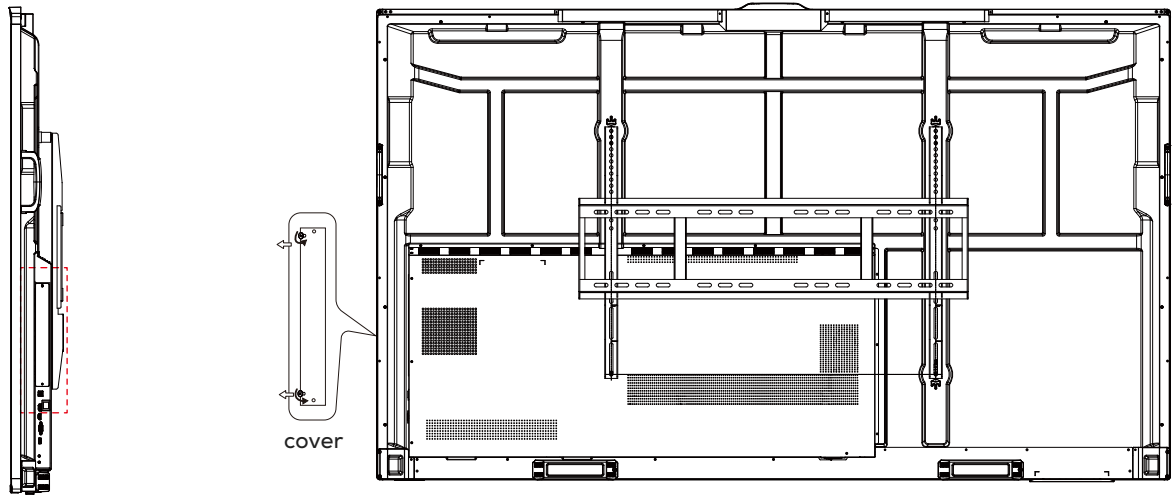
This Wireless Module is an optional accessory, and only works for the Interactive Flat Panel by plugging it into the above slot.

3. Install the PC Module

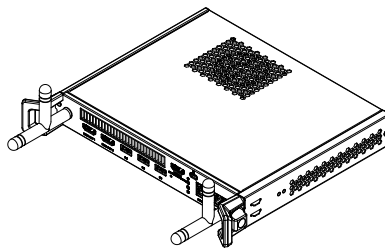
**WARNING**

Please make sure the power cord of the Interactive Flat Panel is disconnected before installation.

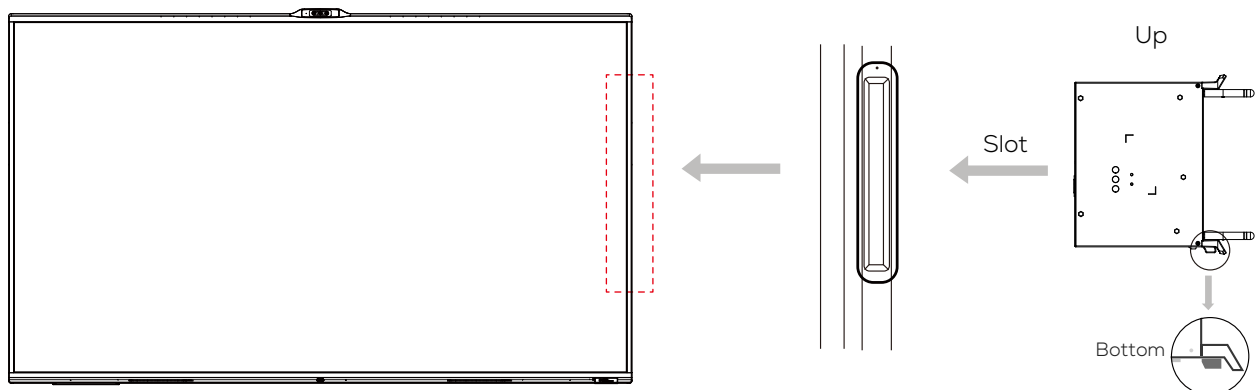
Step1: Unscrew and remove the cover.



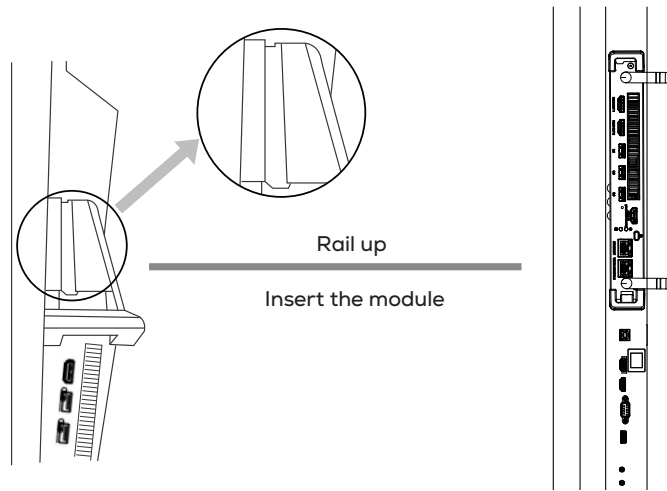
Step2: Prepare the PC module.



Step3: Align the PC module with the slot in the correct orientation.



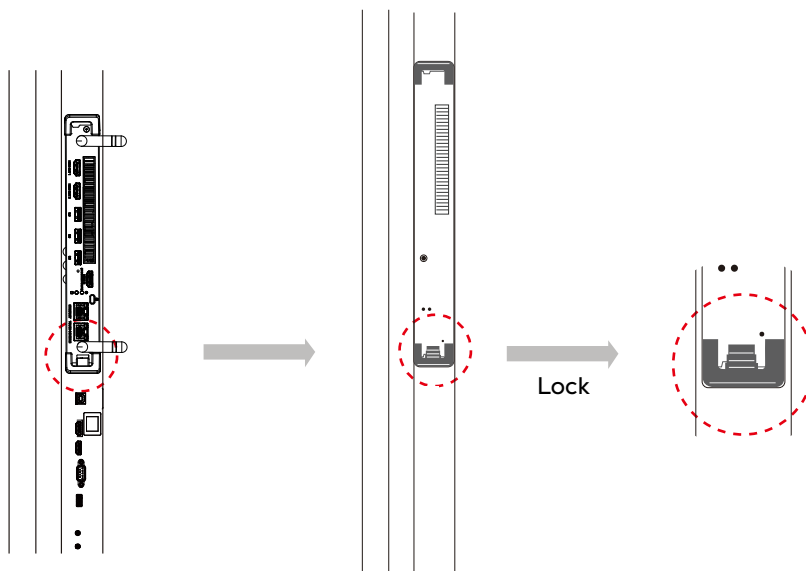
Step4: Installation of PC module.



4. Remove the PC Module

Step 1: Make sure the power is off before removing the PC module.

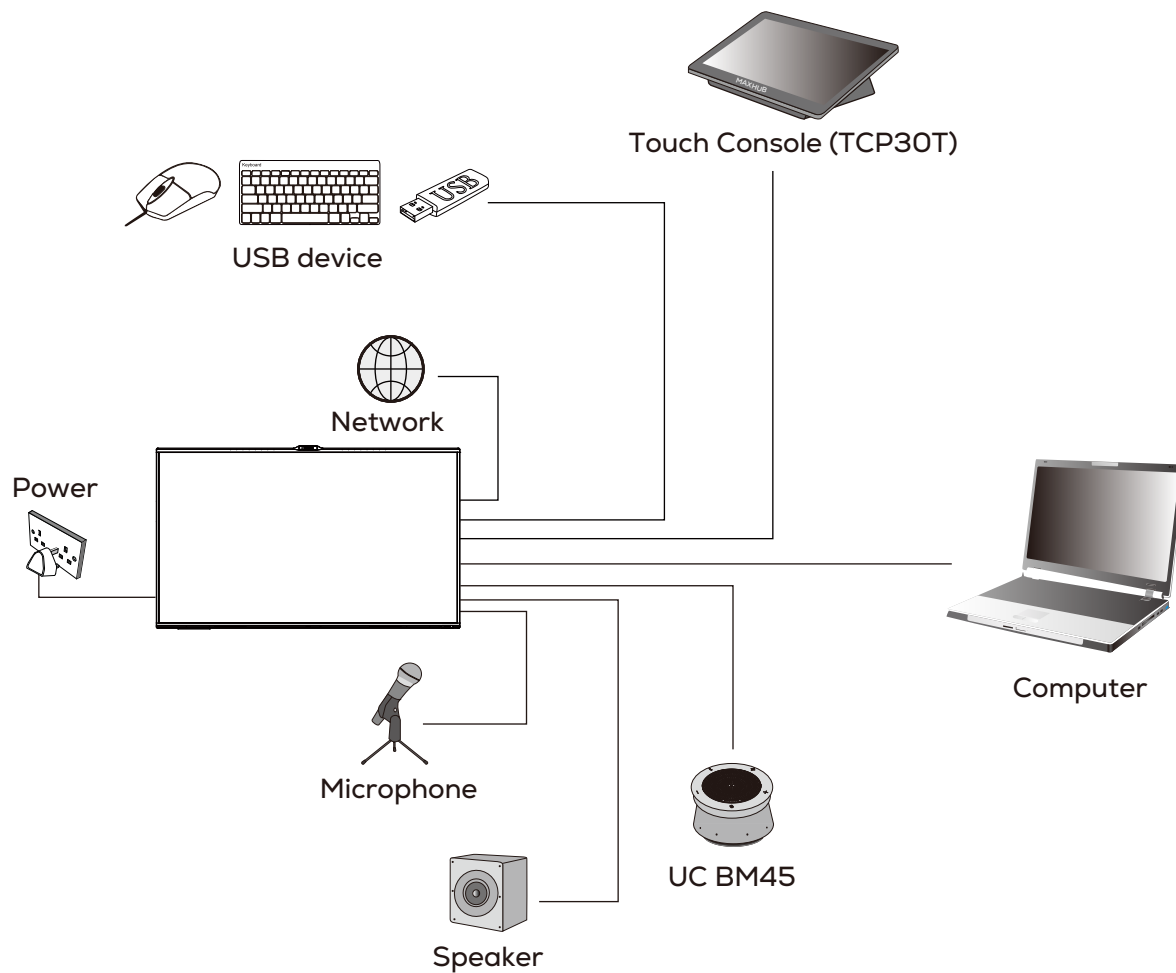
Step 2: Unscrew and release the lock to remove.



IV. Connections

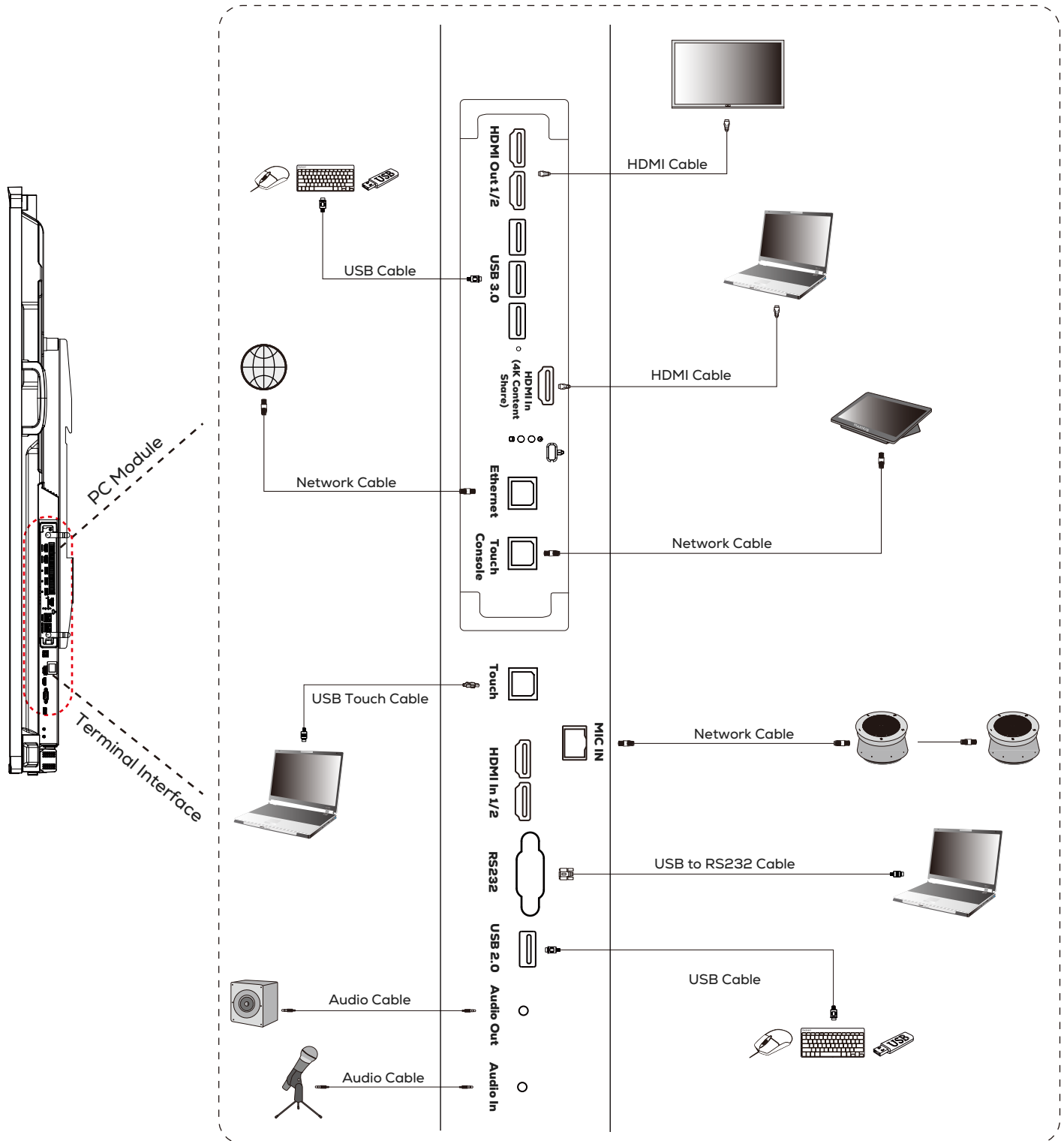
The connector panel is at the right side of the interactive display.

The following diagram shows the examples of devices that can be connected to the interactive display: Power, computer, touch console, speaker, microphone, etc.

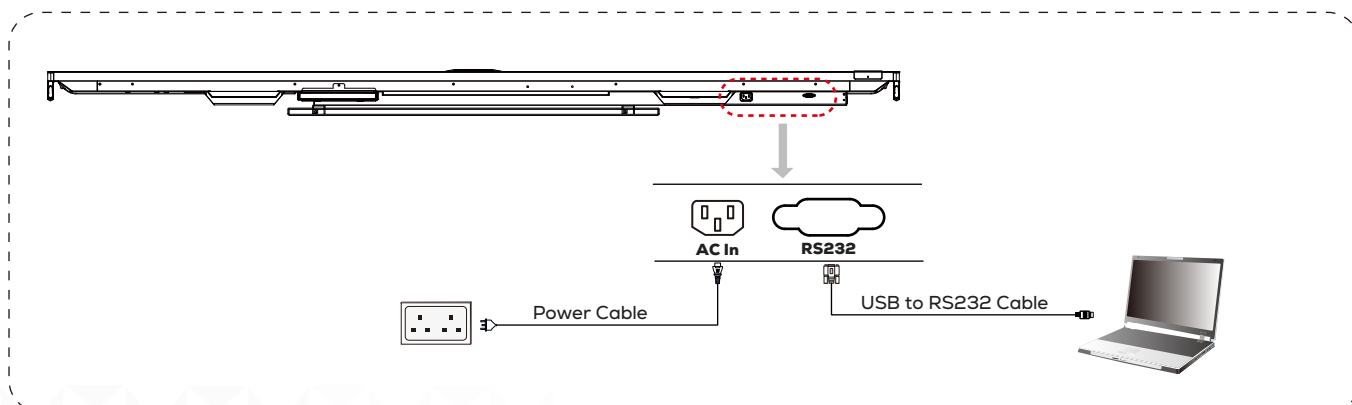
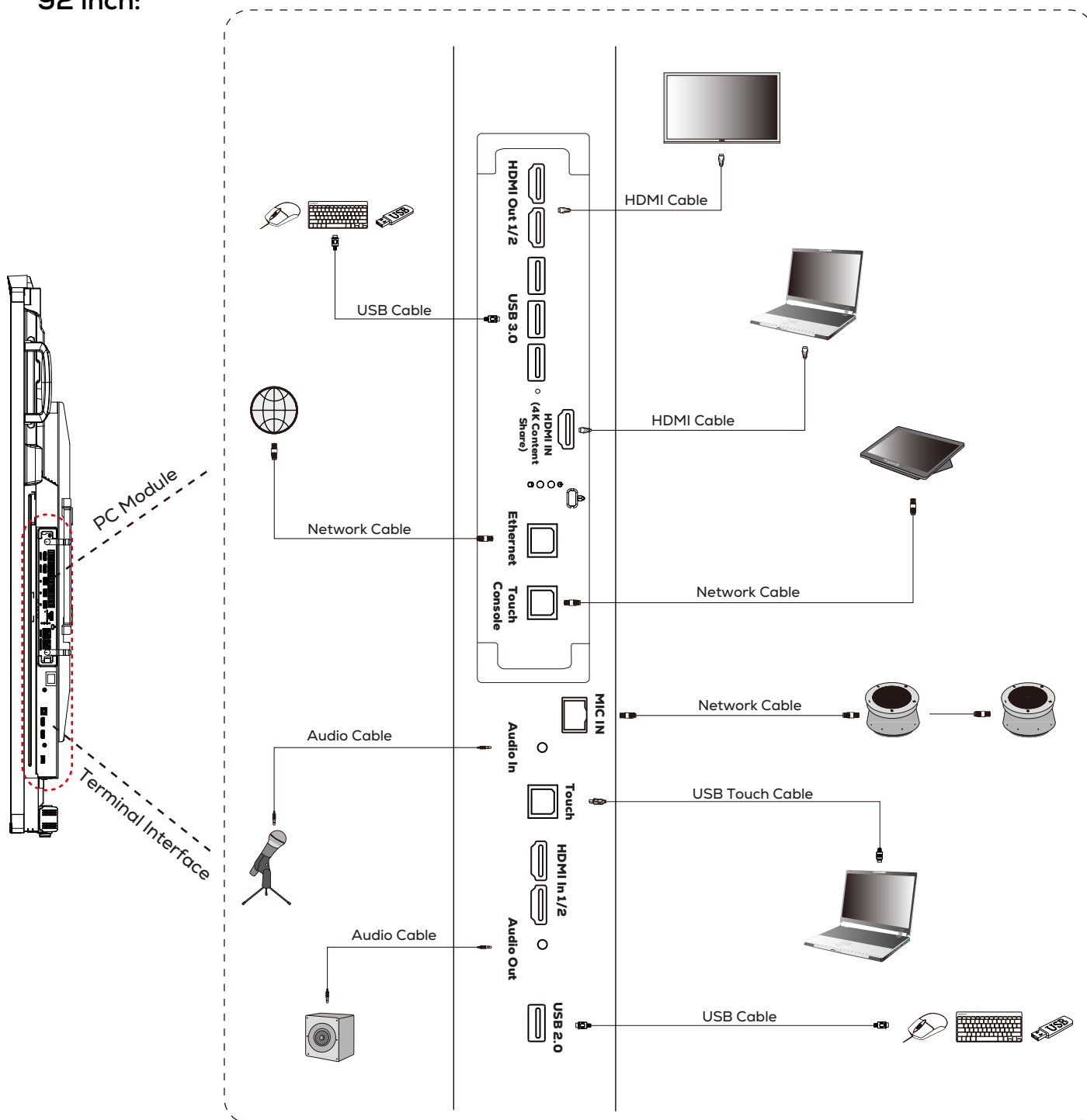


The following diagrams show the examples of how these devices can be connected to the interactive display and the corresponding cables.

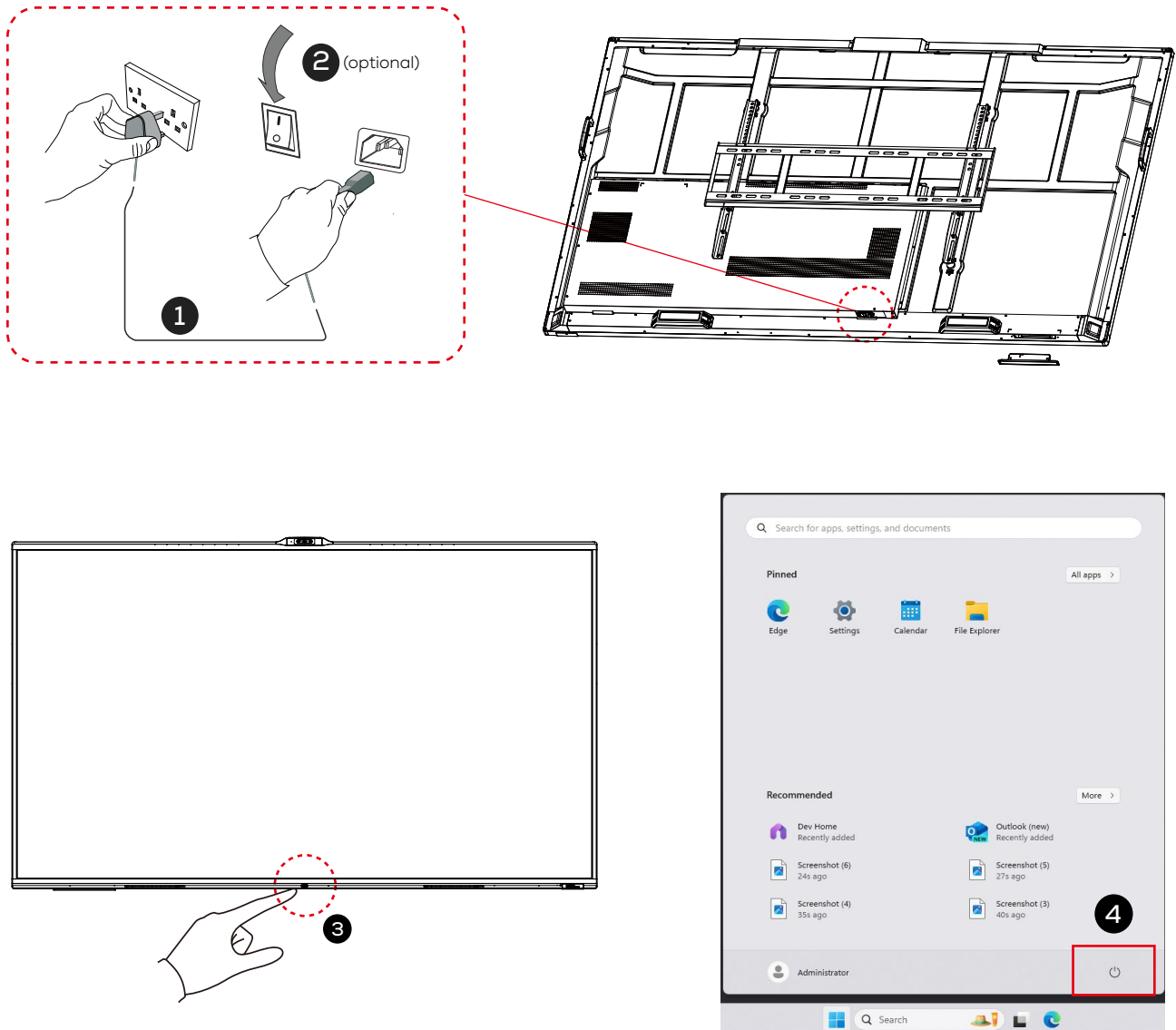
65 / 86 inch:



92 inch:



V. Power On/Off

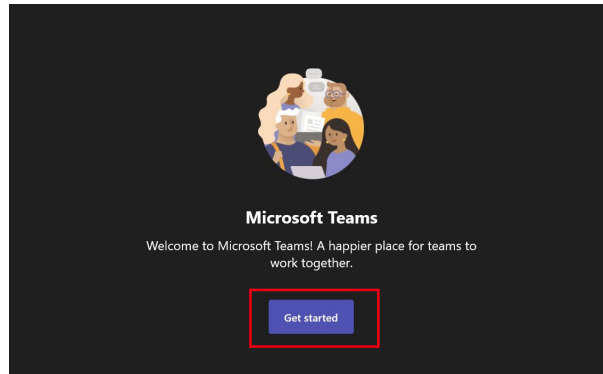


- 1** Plug one end of the power cord into the device and the other end into the wall outlet.
- 2** Optional: Press the AC Switch to open AC power. "I" means power on, and "O" means power off. (only available for 65 inch and 86 inch.)
- 3** Press the power button to turn on the device or put the device on standby.
- 4** Select "Shut down" from the Windows Start menu to shut down the device.

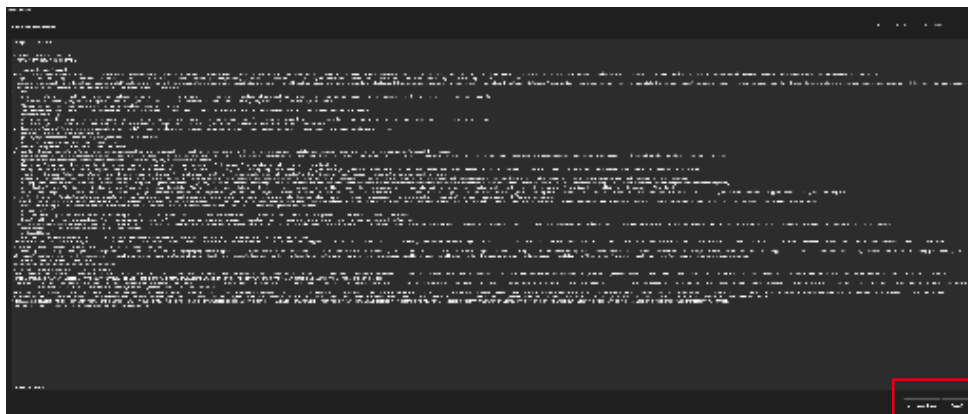
VI. Software and Deployment

Initial Launch Setup

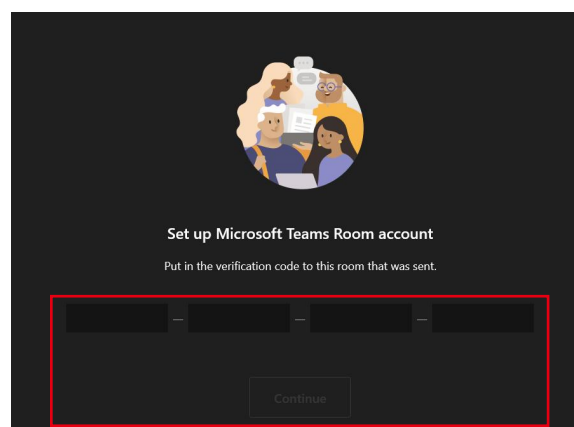
1. Turn on the display, the Welcome Page will be displayed, then click **Get Started** to begin setup.



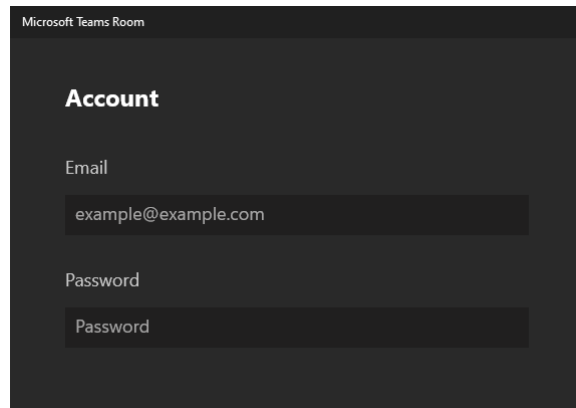
2. Select **Accept** to accept the End User Agreement, or it will decline and exit.



3. Enter the "verification code" to set up your Microsoft Teams Room account, or just click **Continue** to skip this step.

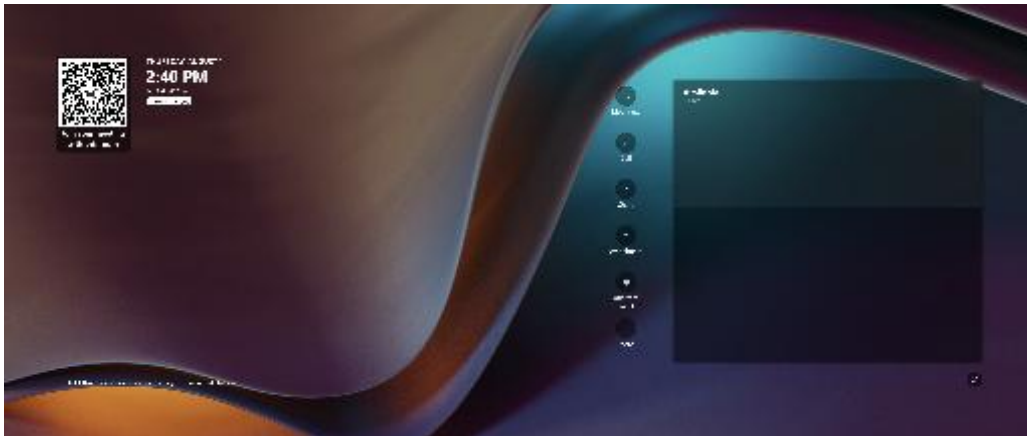


4. Enter the “email address and password” of your account.



The screenshot shows the 'Microsoft Teams Room' account setup interface. It features a dark background with the title 'Account' in white. Below the title, there are two input fields: 'Email' and 'Password'. The 'Email' field contains the text 'example@example.com'. The 'Password' field contains the text 'Password'. The interface is clean and modern, with a focus on the input fields.

5. Click **Finish** to go to the Home Screen page, and all the installed applications can be accessed.



Switch Account

By default, XBoard system has two built-in Windows accounts: Skype and Administrator accounts.

You can switch between the Skype and Administrator accounts as needed for different use.

Skype: Skype is the default account when the system starts, and is limited to running Microsoft Teams Rooms. The Skype user interface is set to Microsoft Teams Mode. You can use Skype to log in to the Microsoft Teams Room System automatically without a password. Skype does not have administrator privileges.

Administrator: Administrator account provides full access to perform any necessary actions in the Microsoft Teams Rooms System with a password (default: sfb). The Administrator interface is set to Windows mode. This account is not required when participating in business or Teams meetings.

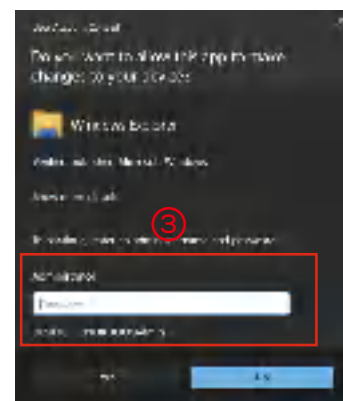
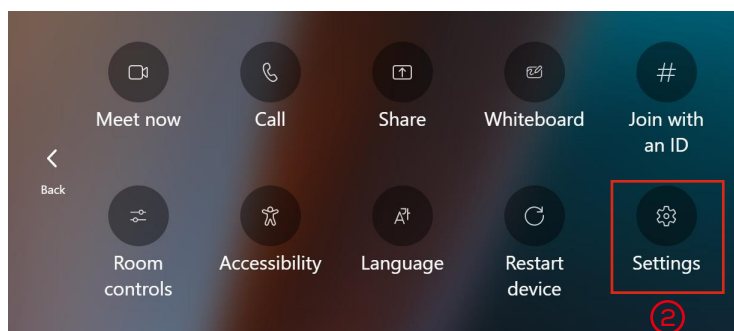
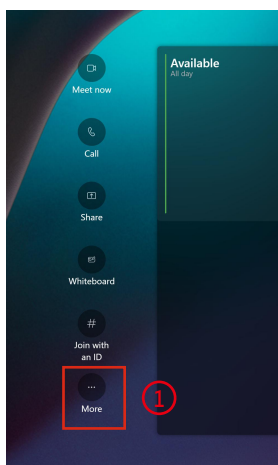
Switch to Administrator account



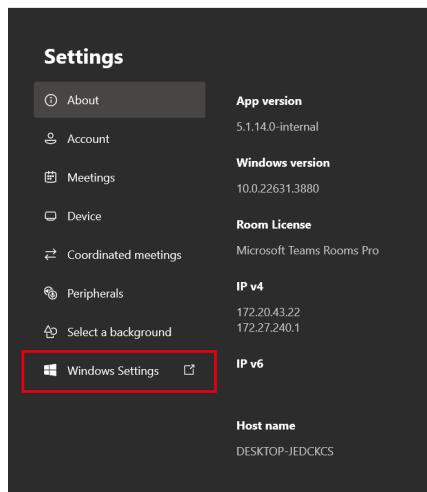
NOTE

Switching the Microsoft Teams Mode to the Windows Mode. <https://docs.microsoft.com/en-us/microsoftteams/rooms/rooms-lifecycle-support>

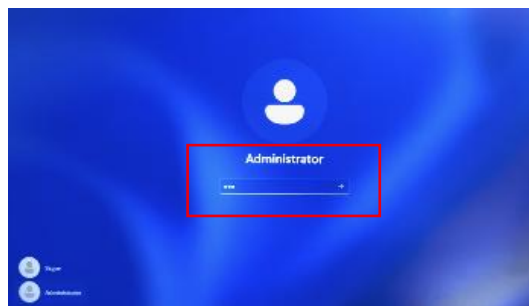
1. In the Microsoft Teams mode, click **More > Settings** > enter password (default:sfb), then go to the Settings page.



2. At Setting page, select **Windows Settings** to go to the Administrator log page.



3. Enter the password (default: sfb), then go to the Home Screen page of Administrator account.



NOTE

If you plug in a physical keyboard, and press the windows key 5 times, it will bring you directly to the Windows Settings login page.

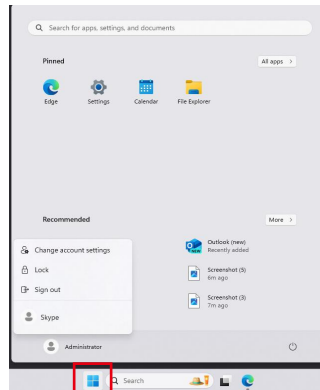
Switch to Skype



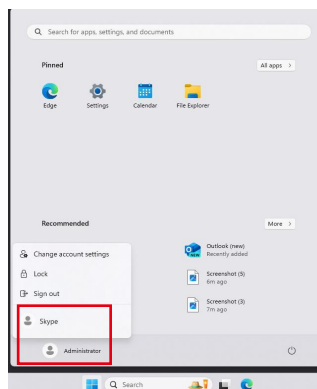
NOTE

Switching the Windows Mode to the Microsoft Teams Mode.

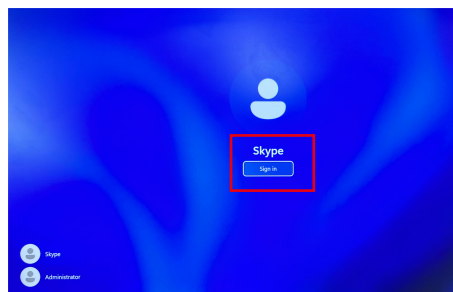
1. In the Windows mode, select the **Windows key** in taskbar.



2. Select **Administrator** > **Skype**, then go to the Skype log page.



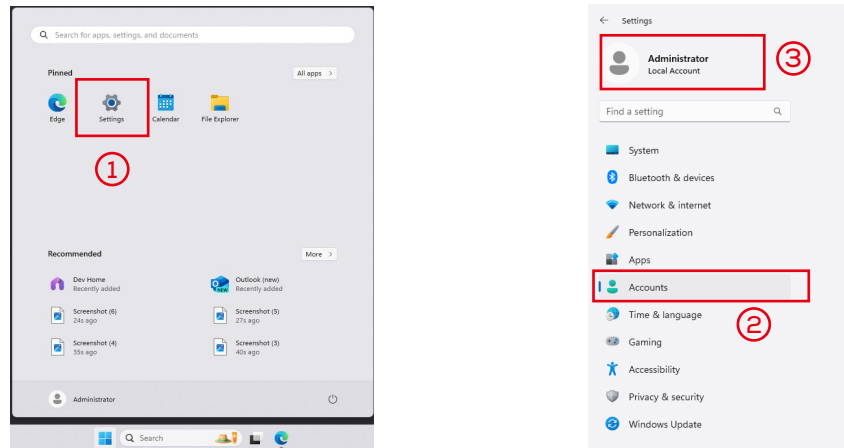
3. Click **Login** to switch to Skype account.



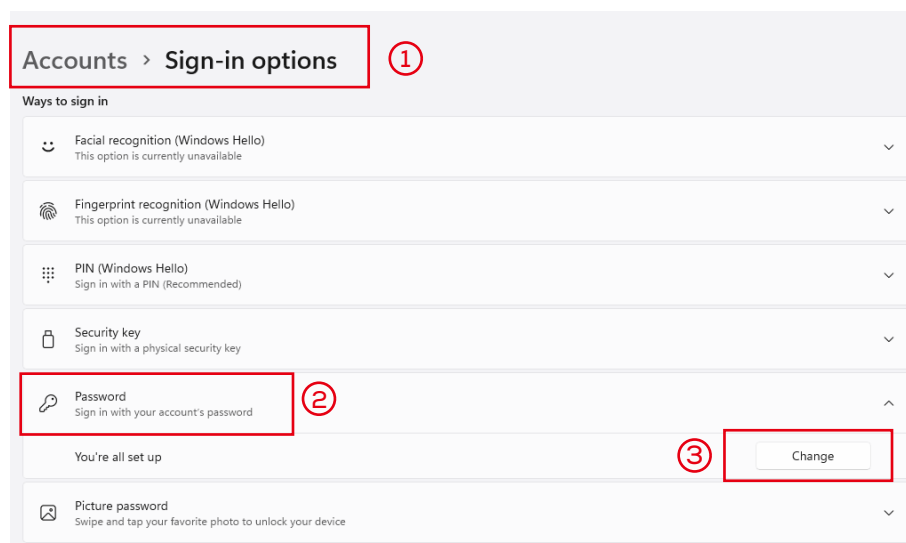
Change Admin Password

The administrator password is set to “sfb” by default, and you can change the password if needed.

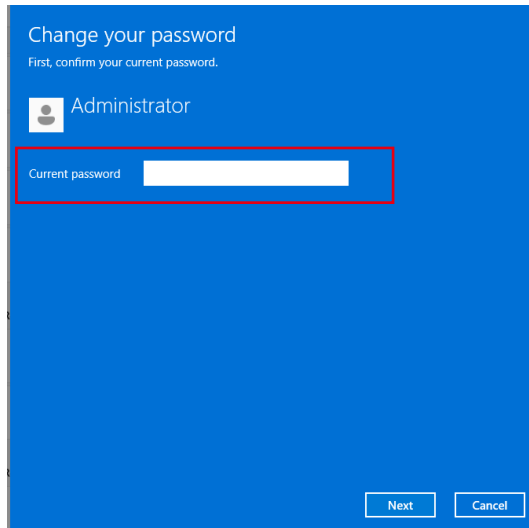
1. Open **Setting** in the Windows mode, and select **Accounts** > Login to Administrator.



2. At Accounts page, select **Sign-in Options** > **Password** > **Change**.



3. Enter the original password (default: sfb) and the new password as prompted, then the Admin password will be changed.



The screenshot shows a blue dialog box titled "Change your password". Below the title, it says "First, confirm your current password." and "Administrator" with a user icon. A red rectangle highlights the "Current password" label and its corresponding text input field. At the bottom right, there are "Next" and "Cancel" buttons.

**WARNING**

Do not turn off or reboot the device while the system is in the update process.

VII. Maintenance

To ensure the proper functioning of the product, it is important to keep it free of dust and moisture.

Regular cleaning with a soft, dust-free, and dry cloth is recommended. Remember to unplug the product before cleaning.

Cleaning the Screen

1. Please dissolve the fabric softener or detergent in 75% alcohol.
2. Please use a piece of soft cloth and soak it with the solution.
3. Take out the cloth and squeeze it dry before wiping on the screen.

Cleaning the Touch Frame

Please choose dry, soft and dust-free wipes to clean the touch frame.

Unplug Power

To protect the device during stormy weather or when it will not be in use for an extended period of time, it is recommended to unplug the power.

FCC Statement

This equipment has been tested and found to comply with the limits for a Class B digital device, pursuant to part 15 of the FCC Rules. These limits are designed to provide reasonable protection against harmful interference in a residential installation. This equipment generates,uses and can radiate radio frequency energy and, if not installed and used in accordance with the instructions, may cause harmful interference to radio communications. However, there is no guarantee that interference will not occur in a particular installation. If this equipment does cause harmful interference to radio or television reception, which can be determined by turning the equipment off and on, the user is encouraged to try to correct the interference by one or more of the following measures:

- Reorient or relocate the receiving antenna
- Increase the separation between the equipment and receiver.
- Connect the equipment into an outlet on a circuit different from that to which the receiver is connected
- Consult the dealer or an experienced radio/TV technician for help.

FCC Warning

This device complies with Part 15 of the FCC Rules. Operation is subject to the following two conditions:

(1) this device may not cause harmful interference, and (2) this device must accept any interference received, including interference that may cause undesired operation.

Changes or modifications not expressly approved by the party responsible for compliance could void the user's authority to operate the equipment.

Hereby, Guangzhou Shirui Electronics Co., Ltd. declares that the this product is compliant with the essential requirements. The complete Declaration of Conformity may be requested through the following postal address:


MAXHUB EUROPE B.V.

BEURSPLEIN 37, 3011AA ROTTERDAM, NETHERLANDS

Energy Star Statement

ENERGY STAR is a U.S. Environmental Protection Agency voluntary program that helps businesses and individuals save money and protect our climate through superior energy efficiency. Products that earn the ENERGY STAR prevent greenhouse gas emissions by meeting strict energy efficiency criteria or requirements set by the U.S. Environmental Protection Agency. The following logo appears on all ENERGY STAR-certified models: This product qualifies for ENERGY STAR in the "Standard mode" setting and this is the setting in which power savings will be achieved. Changing the Standard mode picture settings or enabling other features will increase power consumption that could exceed the limits necessary to qualify for ENERGY STAR rating. Refer to EnergyStar.gov for more information on Energy Star program.



 This symbol, affixed to the product or its packaging, indicates that the product must not be processed with household waste. It must be brought to an electric and electronic waste collection point for recycling and disposal. By the appropriate disposal of this product you also help in preventing potentially negative consequences for the environment and human health. The recycling of materials helps preserve our natural resources. For further information regarding the recycling of this product, please contact your municipality, local waste disposal centre or the store where the product was purchased.



NOTICE: The terms HDMI and HDMI High-Definition Multimedia Interface, HDMI trade dress and the HDMI Logo are trademarks or registered trademarks of HDMI Licensing Administrator, Inc.

