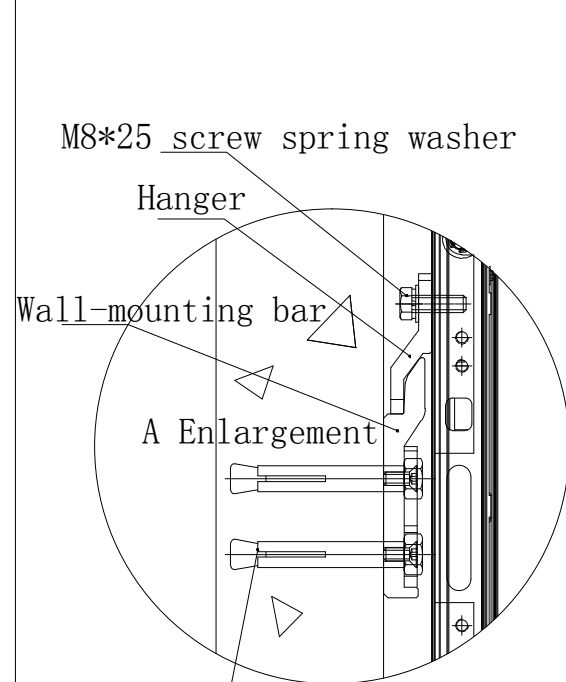
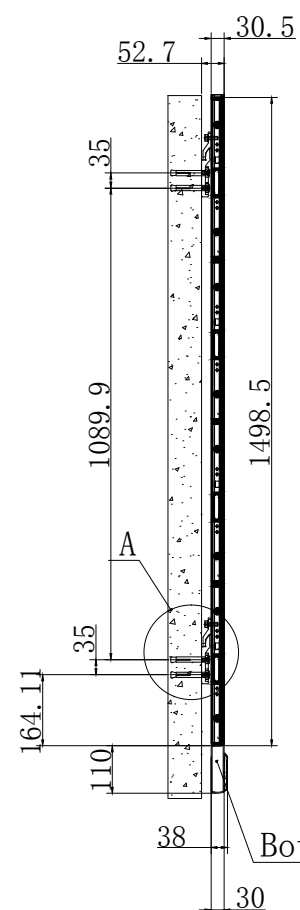


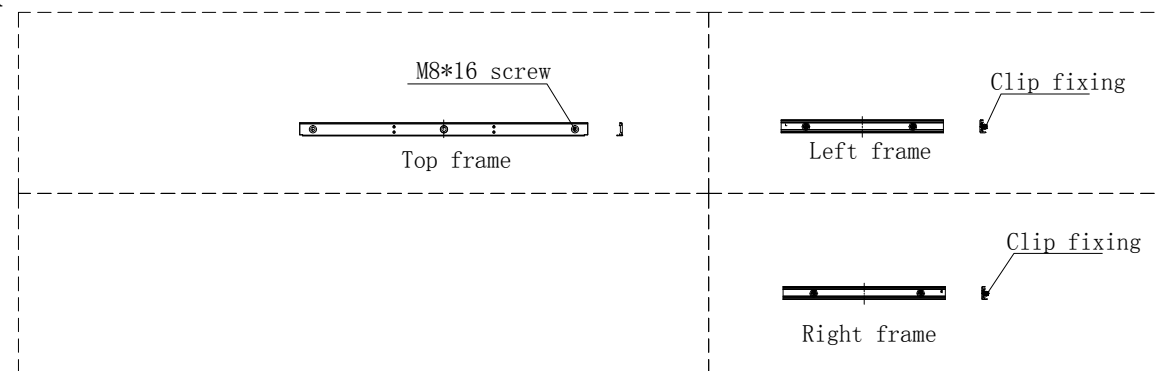
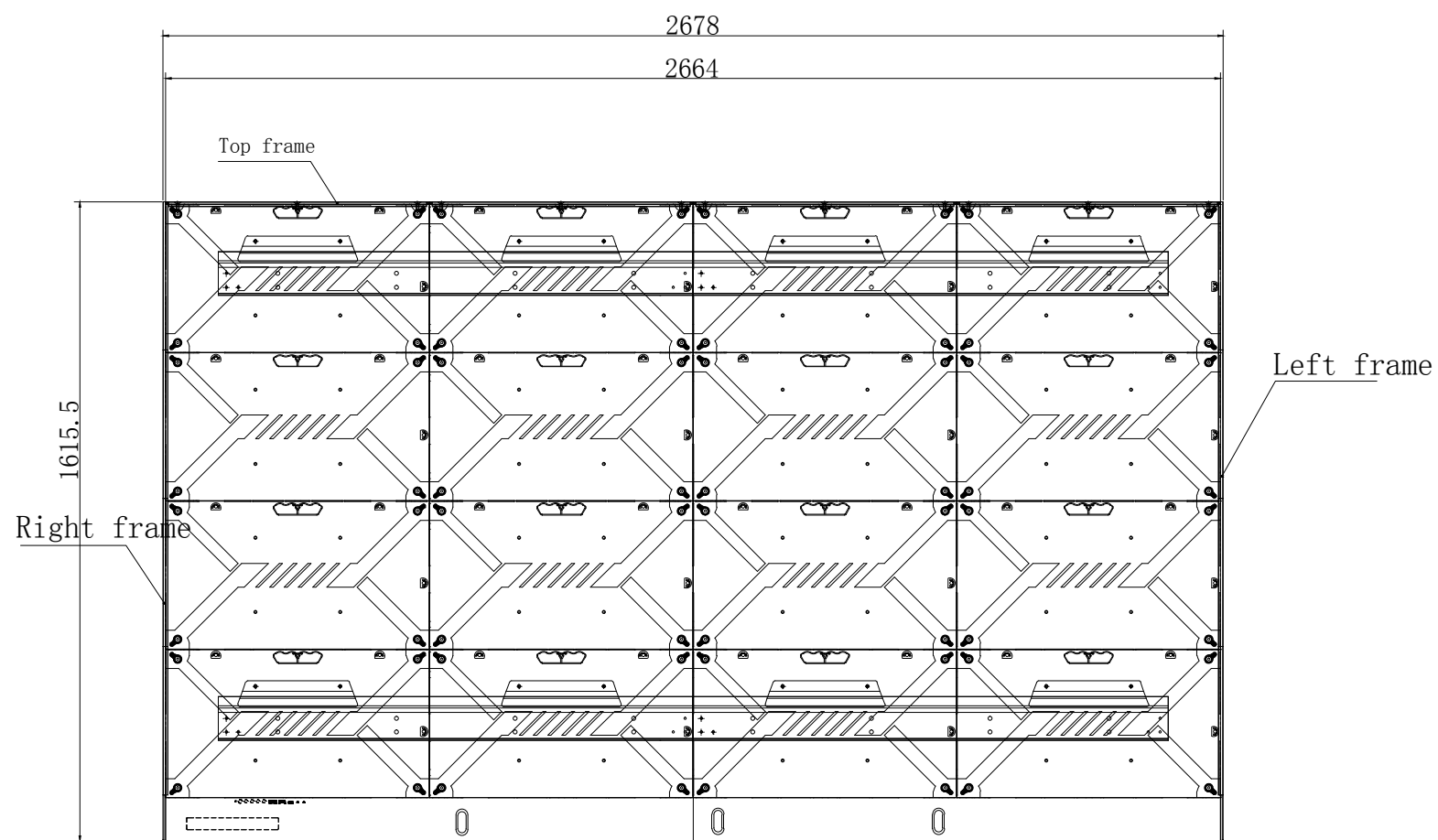
MARK	DATE	DESCRIPTION	NAME
△	XXXX. XX. XX		



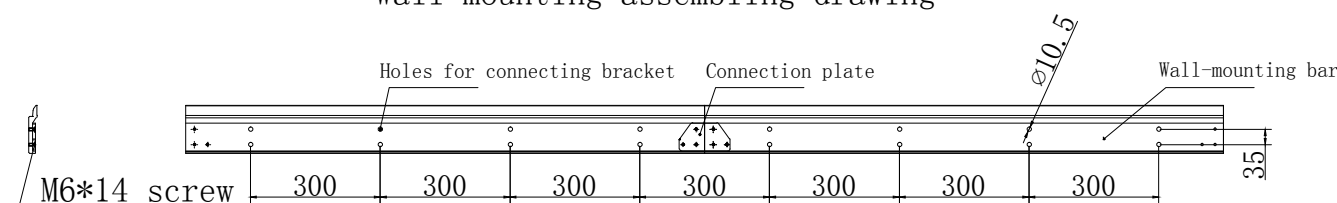
M8*80 expansion screw sleeve (fix the sleeve into the holes drilled on wall)



Bottom bar control box

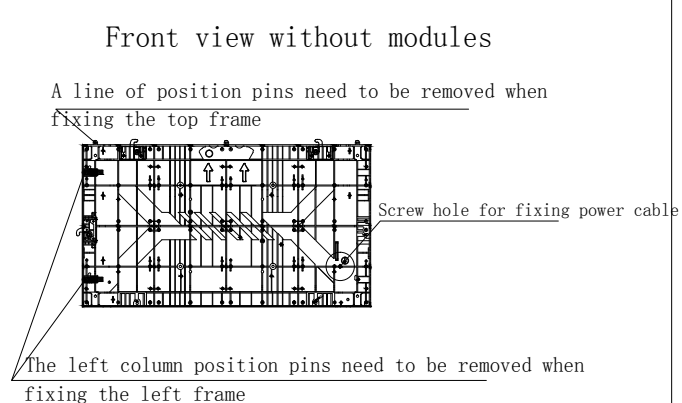
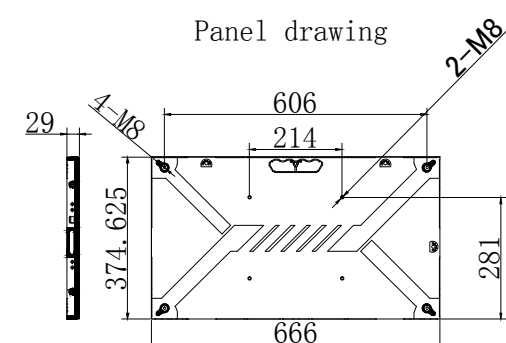


Wall-mounting assembling drawing



Installation illustration:

1. Connect the wall-mounting bar according to "Wall-mounting Bar Connection Drawing";
2. Confirm the hanging bar height based on side-view drawing and on-site situation, drill holes into the wall for M8*80 expansion screw sleeve. (hole position must be accurate, use level meter if necessary)
3. Install the hanging bar with M8*80 expansion screw sleeve
4. Every 4 cabinets in one row connected together with top and bottom lock, fix them to hanger with screws shown in the drawing
5. Hang the panel one column by one column, insert the position pin between columns and fix the side lock;
6. Connect the bottom frame according to bottom bar control box structure, and fix it with side lock on the bottom row;
7. Mount the module in sequence, fix left right and top frame (fix the top frame by screws), light the screen and debug.



Revise sign	Quantity	Renumber	Signature	Date
Designer		SJ	SJT	
Assessor		SH	SHT	
Countersign		HQ	HQT	
Technologist		GY	GYT	
Standardization		BZH	BZHT	
Supervisor		SD	SDT	
Approval		PZ	PZT	

120 inch(2 PLUS) wall-hung type drawing

QS1. 216. 2741-AZ-EN

Grade Remark	Weight	Ratio
		1:1
Page 1	1 Page In All	
Versions: V1.1		

Old Base Map No.	
Base Map No.	
Date	Signature